

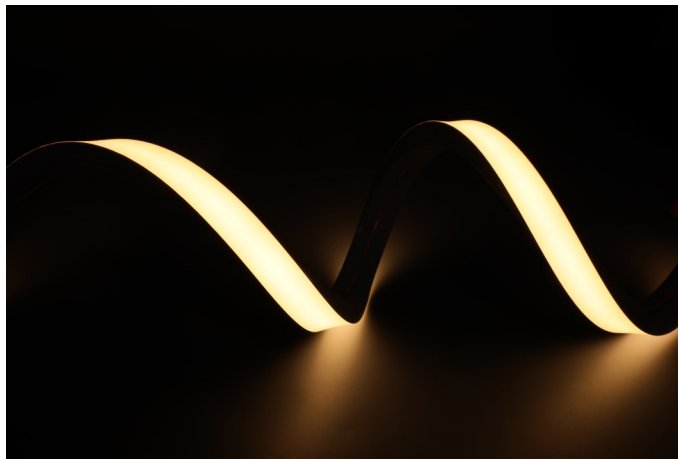
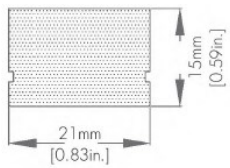
HVR-NEO Top Bend

Static White : 120 volt : IP65



Date: _____ Project: _____ Type: _____

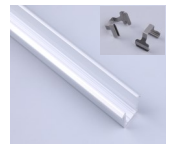
Model Number	HVR-NEOT-XX-HO	
Lumens/foot	2700K	195
	3000K	206
	3500K	210
	4100K	216
	5000K	227
	6000K	236
Watts/foot	4.20	
Max Run Length	164'	
Cut Section Length	12"	



CL1-HVRNT



CL2-HVRNT



CH1-HVRNT



BF (Bottom feed)



EF (End feed)



SFL (Side feed left)



SFR (Side feed right)

Ordering Guide:

Series	CCT	Output/Foot	Length	Feed	Mounting
HVR-NEOT	27 (2700K) 30 (3000K) 35 (3500K) 41 (4100K) 50 (5000K) 60 (6000K)	HO (4.20 watts)	CC @XX (custom cut, specify footage)	BF (Bottom feed) EF (End feed) SFL (Side feed left) SFR (Side feed right)	CL1-HVRNT (bottom clip) CL2-HVRNT (top clip) CH1-HVRNT (rigid channel)

HVR Series ribbon is 120 volt ribbon, requiring all lengths and connections to be made in our factory in order to maintain UL/ETL listing. Lead times apply.

